

Support to the members of the fishing community in Howrah district during the Covid-19 lockdown and the aftermath of the Amphan impact

The fishing community was already hard hit by the economic paralysis induced by the COVID-19 lockdown. On top of it came the Amphan Super Cyclone.

Almost 600,000 people were affected in Howrah with around 11,000 houses completely damaged from the storm. The most affected areas were Shyampur, Bagnan, Uluberia and Amta, including Ghoraberia-Chitnan-Bhatora, the only island in Howrah. Reliefs are being provided in affected parts of the district.

DISHA, in collaboration with Dakshinbanga Matsyajibi Forum (DMF), is trying to do their bit by providing support to the local fishing community of the district. 1164 families have been supported till June 2020.



- 290 families in Amta- II block (Bhatora & Ghoraberia-Chitnan GP),
- 443 families in Bagnan-I block (Bangalpur, Belari, Khadinan - II & Bakshi GP),
- 67 families in Bagnan - II block (Batul Baidyanathpur GP),
- 304 families in Shyampur - II block (Nakole, Sasati, Bachchri, & Dihimondalghat-II GP)
- 60 families in Uluberia - II block (Uluberia Municipality area ward 23)

A. AMTA - II BLOCK

GHORABERIA - CHITNAN - BHATORA ISLAND



To anyone visiting Ghoraberia-Chitnan-Bhatora, Howrah's only island, for the first time, it will seem that the local residents have resigned to their fate of a life of hardship. The life of the islanders, here, surrounded by rivers Roopnarayan and Mundeswari is nothing but a never-ending struggle for existence.

There are two Gram Panchayats in the island - Bhatora and Ghoraberia-Chitnan. There are

two villages under the Bhatora Gram Panchayat - Uttar Bhatora and Dakshin Bhatora. And the five villages under Ghoraberia-Chitnan Gram Panchayat include Ghoraberia, Chitnan, Haatgacha, Beral and Mirgram. As per Census 2011, more than 28000 people live in this island. Most of them are agricultural worker, contract labour, fish worker and other hand to mouth earner. Apart from the other day to day problems, communication remains one of the biggest issues for the residents of this island. Even after 73 years of independence, the residents of this island are dependent on 3 bamboo bridges made under local initiative that connect this island to the "outer world". The island was severely affected by Amphan cyclone.

290 families were provided tarpaulin, lime, & food supplies like lentil, soya bean chunks and edible oil in this island.



On 15.06.2020, **93 families** of the local fishing community were provided tarpaulin, lime and food supplies (lentil, soya bean, edible oil) in Uttar Bhatora village of Bhatora GP.

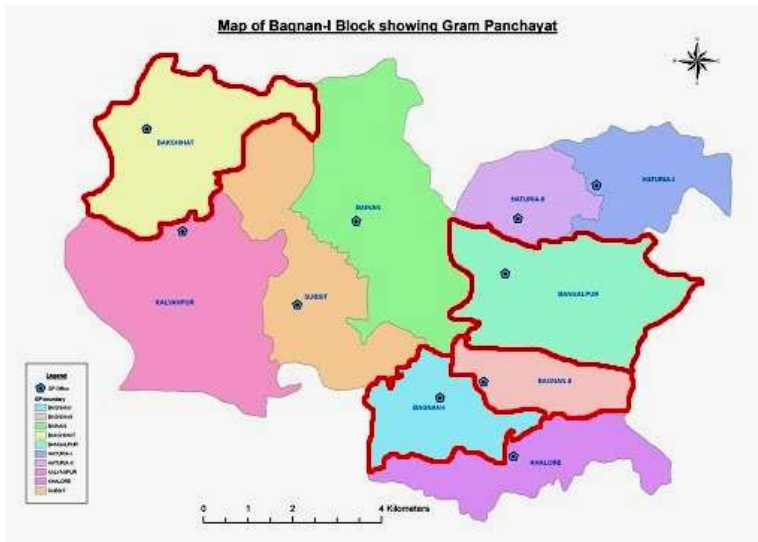


On the same date, **91 families** of the local fishing community were provided tarpaulin, lime and food supplies (lentil, soya bean, edible oil) in Dakshin Bhatora village of Bhatora GP.



Again, **106 families** of the local fishing community in Chitnan Ghatapara in Ghoraghata-Chitnan GP was provided tarpaulin, lime, and food supplies (lentil, soya bean, edible oil) on 15.06.2020.

B. BAGNAN- I BLOCK



Bagnan - I Development Block is a small semi-urbanized block of Howrah District. Total area is 86.33 Sq. Km. The Block is bounded by Amta II and Amta I CD Blocks in the north, Uluberia II and Uluberia I CD Blocks in the east, Bagnan II CD Block in the south and Kolaghat CD Block, in Purba Medinipur district, across the Roopnarayan, in the west. Bagnan I Panchayat Samity has 10 Gram Panchayats. **The worst affected areas due to Amphan Super cyclone in this block are Bangalpur GP, Bakshi GP, Bagnan I GP, Kalyanpur etc.**

Till June 2020, more than 443 families were provided tarpaulin, lime, & food supplies like lentil, soya bean chunks and edible oil in this block



On 16.06.2020, **40 families** of the local fishing community of Bangalpur village under Bangalpur GP were provided tarpaulin, lime, and food supplies (lentil, soya bean, edible oil).



On the same date, support of tarpaulin, lime, and food supplies, was provided to **46 families** of the local fishing community in Kalikapur village under Bangalpur GP.



45 families of the local fishing community in Gopalpur village in Bagnan II GP were provided tarpaulin, lime, and food supplies (lentil, soya bean, edible oil) on that very date.

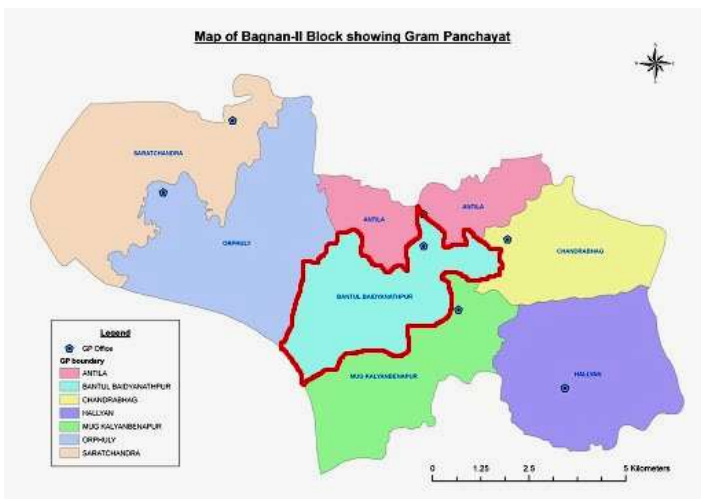


On 17.06.2020, **70 families** of the local fishing community in Rajapara village in Bagnan II GP were provided tarpaulin, lime, and food supplies (lentil, soya bean, edible oil).



Furthermore, **112 families** in Paschim Mankur village, **40 families** in Bakshihat village, **52 families** in Deygram village and **38 families** in Purba Mankur village (under Bakshi GP of Bagnan – I block) were provided tarpaulin, lime and food supplies (lentil, soya bean, edible oil) at Mankur village on 16.06.2020, 17.06.2020, 18.06.2020 and 21.06.2020 respectively.

C. BAGNAN- II BLOCK



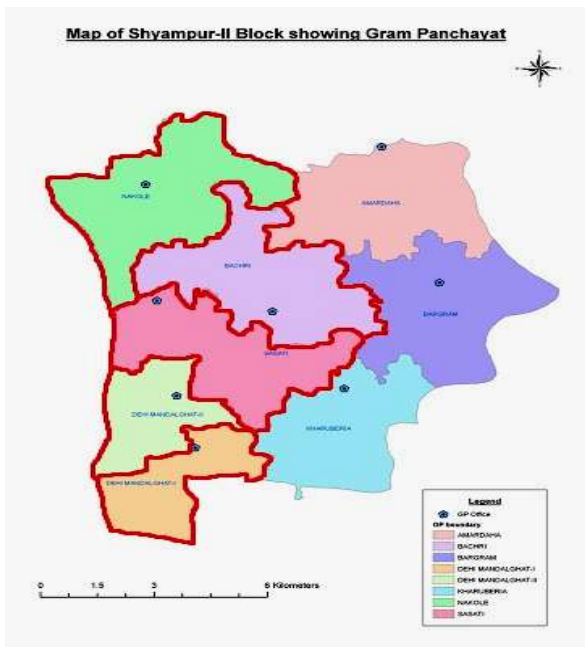
Bagnan - II Development Block is a small semi-urbanized block of Howrah District. Total area of the Block is 77.52 Sq. Km Bagnan II CD Block is bounded by Bagnan I CD Block in the north, Uluberia I CD Block in the east, Shyampur II CD Block in the south and Sahid Matangini and Kolaghat CD Blocks, in Purba Medinipur district, across the Rupnarayan, in the west. Bagnan II Panchayat Samity has 7 Gram Panchayats. **The worst affected areas due to Amphan Super cyclone in this block are Batul Baidyanathpur, Orphuly, & Mugkalyanbenapur GP.**

67 families were provided tarpaulin, lime and food supplies like lentil, soya bean chunks and edible oil in this block.



On 18.06.2020, **67 families** of the local fishing community in Parbotipur village under Batul Baidyanathpur GP were provided tarpaulin, lime, and food supplies (lentil, soya bean, edible oil).

D. SHYAMPUR - II BLOCK



Shyampur-II Block is located 62 km from Howrah, the district headquarters. The Block is bounded by Shyampur I block and River Damodar in East, River Rupnarayan in West, Bagnan II Block, River Damodar and Uluberia I Block in North and Shyampur I Block in South. Shyampur II Block has an area of 100.25 Sq. km

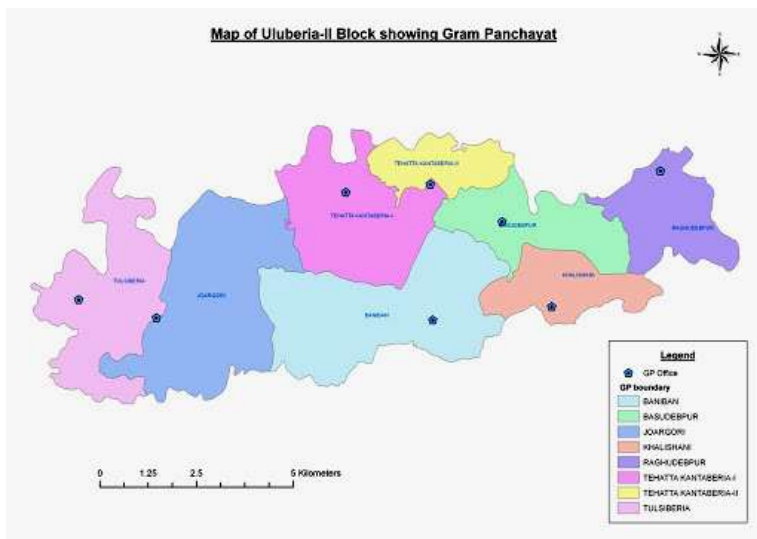
The Block has 8 Gram Panchayats. **The worst affected areas due to Amphan Super cyclone** in this block are Dihimondalghat, Nankol, Sasati and Bachchri GP.

304 families were provided tarpaulin, lime and food supplies like lentil, soya bean chunks and edible oil in this Block.



On 19.06.2020, **304 families** of the local fishing community in Sasati GP, Nakole GP, Bachhri GP, and Anantapur Mill Gate area (Dihimondal Ghat II GP) were provided tarpaulin, lime, and food supplies (lentil, soya bean, edible oil etc).

A. ULUBERIA-II BLOCK



Uluberia-II Development Block with an area of 72.21 sq. km situated in the west side of the Howrah District & lying at a distance of 10 km. from Uluberia Sub-Division. The block is bounded with Amta-I Dev. Block in north; Bagnan-I Dev. Block in west; Panchla Dev. Block in east and Uluberia Municipal area in west. Uluberia-II Development Block is a semi-urban block with a mixed population of 'Urban' & 'Rural' nature. The block comprises with 8 (eight) numbers of Gram Panchayats. In one side a large number of inhabitants of mixed culture are working in Jute Mills and other small and large scale industries, whereas nearly 30% of the total population depends on agricultural activities.

The fishing community people living in ward no 23 of Uluberia Municipality area have an unusual story to tell – they are considered outcast by both the block development authorities and the municipal authorities. These people are not considered eligible for any kind of government schemes launched for the development of the residents of Uluberia – II block as they live in municipality area. On the other hand, the municipal authorities ask them to approach the block development authorities

for any information or help. Even getting an identity card is matter of utmost patience and perseverance.



On 20.06.2020, DISHA, in collaboration with DMF, supported 60 families by providing tarpaulin to 20 families and food supplies (lentil, soya bean, edible oil) to 40 families of the local fishing community in Jagannathpur (Ward no 23) under Uluberia Municipality of Howrah district.